

# PORT MANATEE ENCOURAGEMENT ZONE PDEZ-08-20 (Z)(G)(R2)

## PDEZ-08-20 (Z)(G)(R2) AREA B

Acreage - ± 1,041

Height, Bulk, Dimensional, & Landscape Requirements:

Zone B- Max. Height- 75 ft./interior\* , 55 ft./perimeter\*  
Min. Setbacks- 25'-F, 20'-S, 30'-R  
FAR- .75 in IL and .5 in IH  
Roadway Buffer- 20 ft. per 603.21.6.1

The minimum landscape open space is 15%

\* Perimeter is outer 200' of area

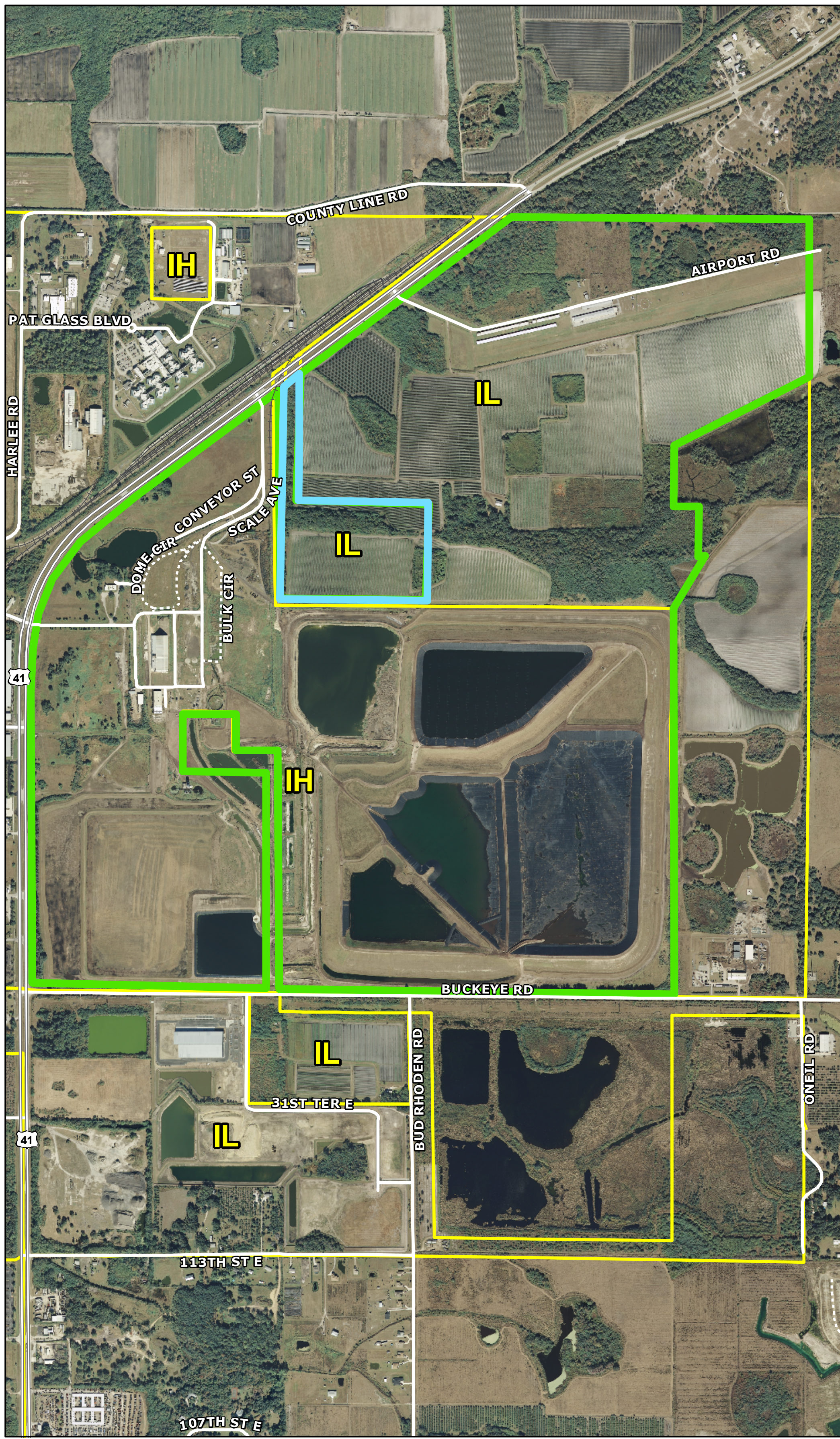
### Uses in IH FLUC

- Agricultural Research Facilities
- Short Term Agricultural Uses
- Agricultural Products Processing Plants
- Agriculture
- Animal Products Processing Facility
- Sawmills
- Industrial Service Establishment
- Motor Vehicle Repair, Major
- Office
- Printing, Heavy
- Wholesale Trade Establishment
- Heavy Manufacturing
- Light Manufacturing
- Research and Development Activity
- Antenna
- Camouflaged Tower (150' Max.)
- Guyed Tower
- Lattice Tower (400' Max)
- Monopole Towers
- Post Offices
- Public Community Use
- Public Use Facility
- Radio, TV, Communications, & Microwave Facilities
- Utility Use
- Minor Earthmoving
- Major Earthmoving
- Passive Recreational Uses
- Day Care Facilities (Accessory)
- Airport, Public or Private
- Bus RR Passenger Station
- Heliprot
- Helistop
- Intermodal Terminal
- Motor Freight Terminal
- Motor Pool Facilities
- Railroad Switching/Classification Yard
- Warehouse

- Bank Drive Thru
- Drive Thru Eating Establishment
- Dry Cleaners, pick up
- Eating Establishments
- Exterminating and Pest Control
- Farm Equipment and Supply Establishment
- Farming Service Establishment
- Lumberyard
- Hotels
- Outdoor Storage
- Service Station
- Towing Service Establishment
- Gas Pumps

### Uses in IL FLUC

- Agricultural Research Facilities
- Short Term Agricultural Uses
- Agricultural Products Processing Plants
- Agriculture
- Animal Products Processing Facility
- Sawmills
- Industrial Service Establishment
- Motor Vehicle Repair, Major
- Office
- Printing, Heavy
- Wholesale Trade Establishment
- Light Manufacturing
- Research and Development Activity
- Antenna
- Camouflaged Tower (150' Max.)
- Gas Pumps
- Guyed Tower
- Lattice Tower (400' Max)
- Monopole Towers
- Post Offices
- Public Community Use
- Public Use Facility
- Radio, TV, Communications, & Microwave Facilities
- Utility Use
- Minor Earthmoving
- Passive Recreational Uses
- Day Care Facilities (Accessory)
- Bus RR Passenger Station
- Heliprot
- Helistop
- Intermodal Terminal
- Motor Freight Terminal
- Motor Pool Facilities
- Railroad Switching/Classification Yard
- Warehouse
- Farming Service Establishments
- Drive-Thru Eating Establishment
- Farm Equipment and Supply Establishment
- Service Station
- Eating Establishment
- Bank Drive Thru
- Dry Cleaners, Pick-Up
- Exterminating and Pest Control
- Hotels
- Lumberyard
- Outdoor Storage
- Towing Service Establishment



	NEW EZ PARCELS	<b>EXISTING EZ PARCELS</b>	<b>NEW PARCELS</b>
	FUTURE LAND USE	590610509	590600059
	ROADS	591400007	
		595900002	
		590600059	

0    550    1,100    1,650

Feet

This map was developed by the Manatee County Geographic Information Systems Division. It is provided for general reference and is not warranted in any way. Errors from non-coincidence of features from different sources may exist. The Manatee County BOCC shall be held harmless for inappropriate or unintended uses of the information.

Map Author: paulh  
Creation Date: 3/2011  
Map Document Name: C:\PLANNING\John OPDEZ Expansion